



**Detailed Connections**



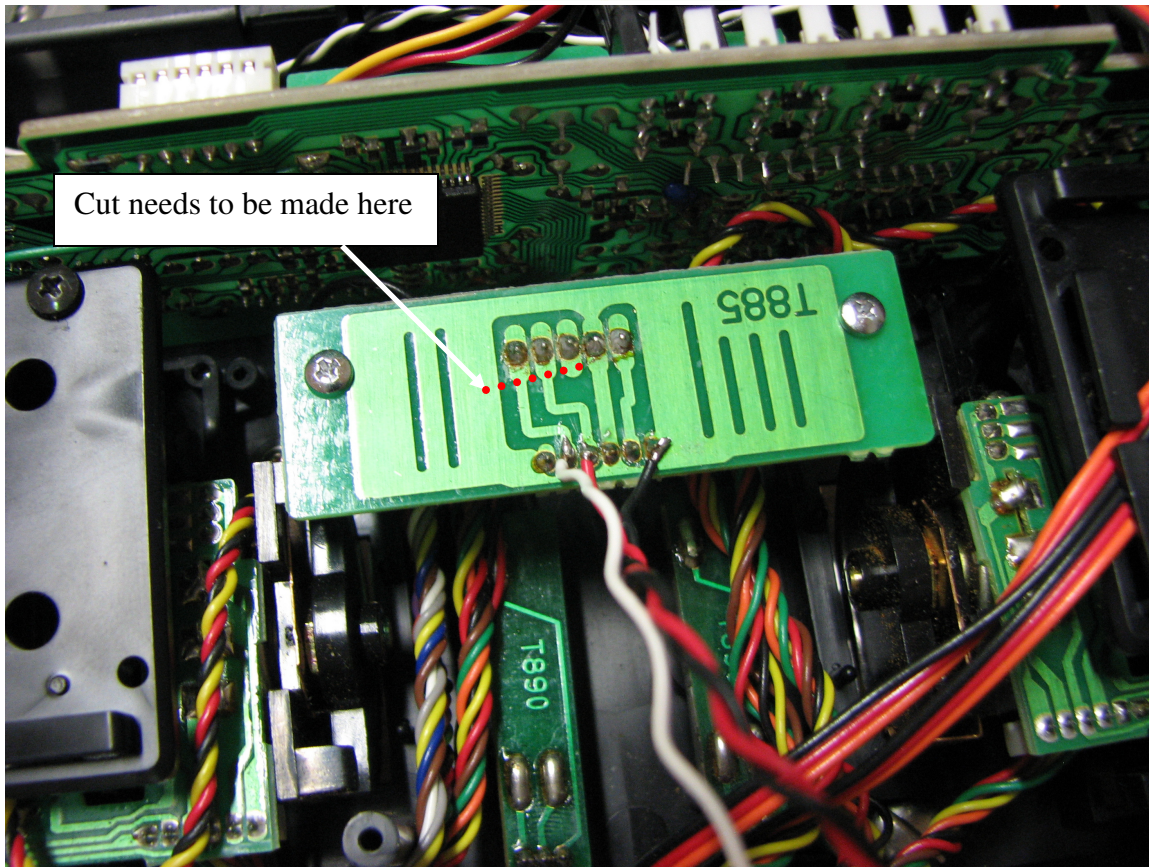
Picture 1 General Overview

A general overview is shown in picture 1. Used wires from the BACKSIDE of the transmitter module PCB are white, red and black. The connection to the Assan module is then :

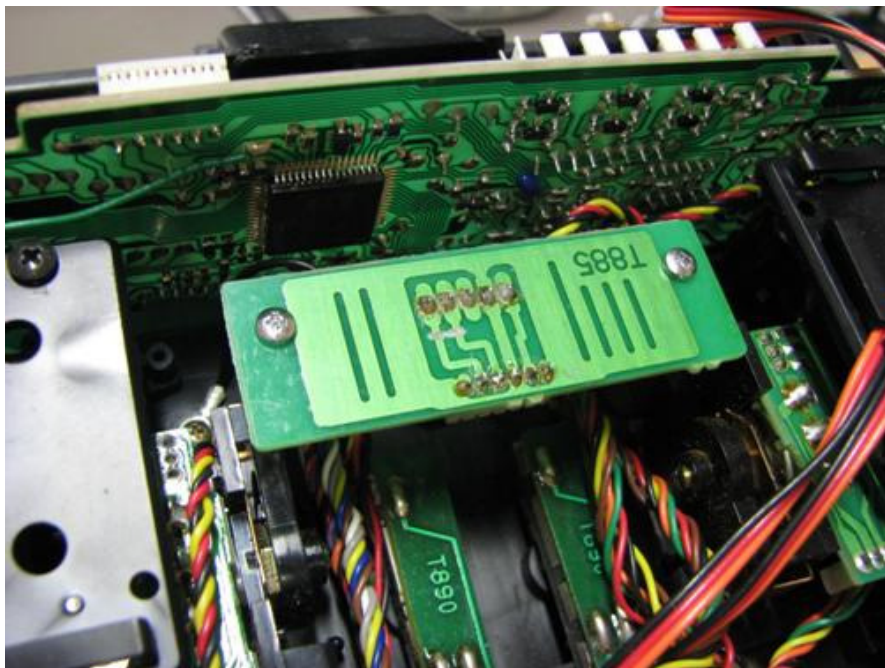
FC-18 transmitter PCB	Assan Module
White (pulse)	Orange
Red (+5V)	Red
Black (GND)	Brown

Picture 2, on the next page, shows the connections in more detail. Please be aware that the cut has not been made yet. This picture was taken during the debug phase. The final circuit needs two disconnected traces. Refer to picture 3.





Picture 2 Connection of white (pulse) , red (supply) and black (GND) signals



Picture 3 PCB traces cutted before wires are soldered on BACK SIDE of transmitter PCB

